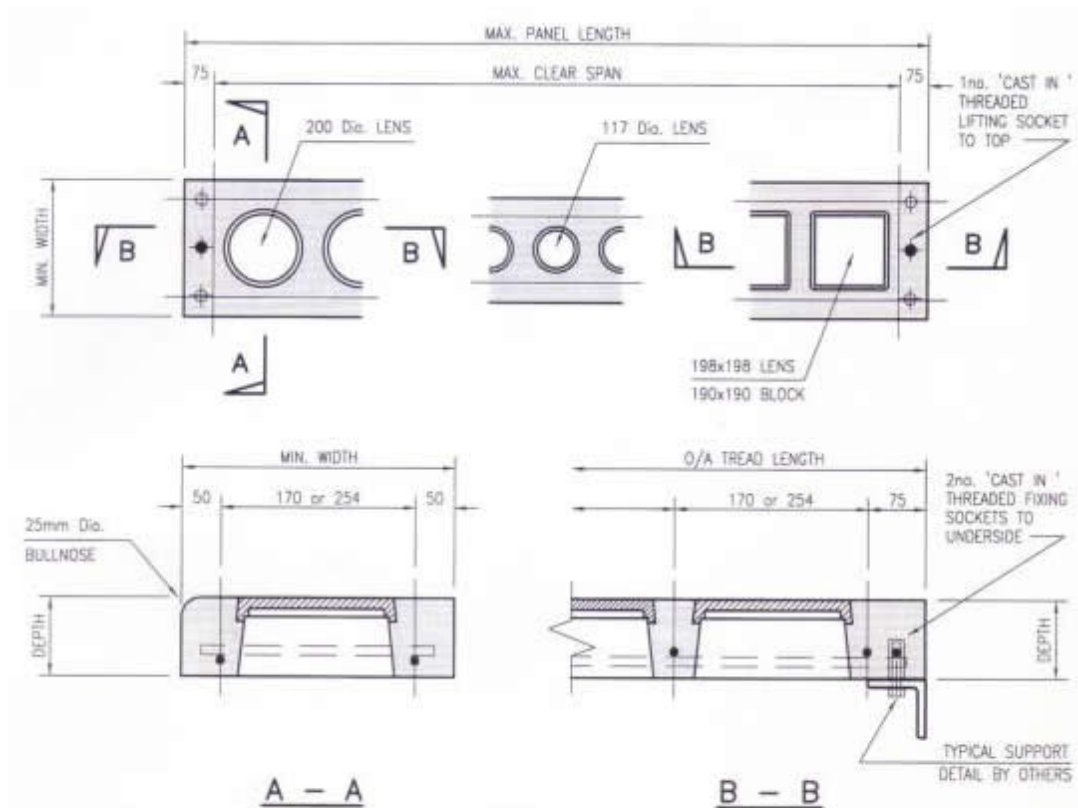


LUXCRETE PRECAST STAIR TREADS

LUXCRETE precast concrete and glass stair treads are tailor made to suit the clients requirements, either on a supply only basis, or installed on site by skilled LUXCRETE personnel.

The standard colour/finish is a smooth trowelled natural grey concrete. Other options may be available upon request. In the interests of safety, we recommend that an area of the top surface of the glass is sandblasted and finished with a polymer coating, to provide increased slip resistance.



CONSTRUCTION REF.	LENS SIZE	Max. CLR SPAN	Max. O/A LENGTH	Min. WIDTH	DEPTH	LOADINGS		WEIGHT (Kgs/m ²)
						Superimposed (Kn/m ²)	Concentrated (Kn)	
PC170/100ST	117 Dia.	1490	1640	270	100	4	4	190
R254/90ST	198x198	1330	1480	350	90	4	4	150
RC254/100ST	200 Dia.	1470	1620	350	100	4	4	165
R254/B191ST	190x190	1380	1530	350	100	4	4	173